

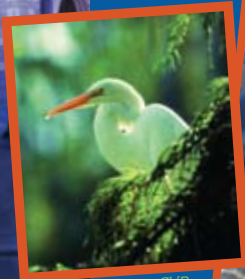
Course Educational Methods

Lectures: Each day, the participants attend general sessions designed around the Society's vulvovaginal curriculum, which details the necessary and basic principles required to evaluate, diagnose and manage vulvovaginal health and disease in women. Each session concludes with a question and answer period led by the presenter(s).

Pattern Recognition/Case Sessions: Intense and interactive exposure to multiple vulvovaginal cases and vulvar dermatologic images helps to sharpen assessment skills. Over 400 different vulvovaginal images are presented during the span of a given course, allowing participants to practice recognition of various vulvovaginal conditions.

Each day, an interactive session on vulvovaginal conditions is conducted. For the "Your Diagnosis Is?" session, faculty present unusual cases for open questions, group diagnosis and management votes, and correct answers. In the "Stump the Professors" session (and a similar "Ask the Experts" session), participants present their own difficult vulvovaginal patient histories and images before the faculty and their colleagues for assessment and discussion.

Surgical Videos: One 45-minute faculty-led video session showing the best surgical videos of the vulva is included.



Courtesy Orlando CVB



Courtesy Orlando CVB